



International Journal of Innovative Research in Science Engineering and Technology (IJIRSET)

(A Monthly, Peer Reviewed, Refereed, Scholarly Indexed, Open Access Journal)



Impact Factor: 8.699

Volume 14, Issue 8, August 2025

An AI-Powered System for Intelligent Medical Suggestions

Dhananjay R¹, Dr. Puja Shashi²

PG Student, Dept. of MCA, City Engineering College, Bengaluru, Karnataka, India¹

Professor & HOD, Dept. of MCA, City Engineering College, Bengaluru, Karnataka, India²

ABSTRACT: Access to timely and reliable medical guidance remains a challenge for many individuals, particularly those in remote or underserved regions. Often, people delay seeking professional help because they cannot judge the severity of their symptoms or due to limited healthcare availability. This work introduces an artificial intelligence-driven medical assistance system designed to offer preliminary health suggestions based on user-reported symptoms. The system collects inputs such as age, gender, and symptom descriptions, and matches them against a curated medical knowledge base built from trusted sources. By applying rule-based analysis and machine learning models, it generates personalized recommendations that may range from basic home care to urgent medical consultation. The solution emphasizes a simple, multilingual, and accessible interface suitable for users with minimal technical skills. Such a system can be particularly valuable in rural areas, reducing unnecessary hospital visits and encouraging early intervention. While it is not intended to replace licensed medical practitioners, it serves as an effective guide for promoting health awareness and informed decision-making

KEYWORDS: Artificial Intelligence, Medical Suggestion System, Symptom Analysis, Health Guidance,

I. INTRODUCTION

plays a central role in determining the quality of human life, yet many individuals face difficulties in recognizing when professional medical attention is necessary. Minor symptoms are often ignored until they escalate, while in some cases, people seek help too late due to distance, cost, or busy schedules. The problem is more pronounced in rural and underserved areas, where access to qualified healthcare professionals is limited. In such situations, a reliable preliminary guidance system can make a significant difference by helping individuals assess their condition early.

With advancements in artificial intelligence (AI), it is now possible to design intelligent tools that analyze health-related information and provide meaningful suggestions. These systems can process user inputs such as symptoms, age, and pre-existing conditions, and offer advice ranging from simple home remedies to recommendations for immediate medical consultation. Such technology cannot replace professional diagnosis, but it can guide users toward timely action, preventing unnecessary complications.

The proposed system is a user-friendly, AI-powered platform capable of assisting people from diverse backgrounds, including those with limited technical skills. It uses a symptom-based query mechanism, matches the information against a verified medical dataset, and returns actionable health advice. Beyond its value in everyday healthcare decision-making, this solution has the potential to reduce strain on medical facilities by filtering non-critical cases and improving awareness of early warning signs.

In today's fast-paced world, the ability to make informed health decisions at the right time can greatly influence recovery outcomes. Many individuals rely on unreliable online resources or postpone medical consultations due to uncertainty about their symptoms. By integrating artificial intelligence into healthcare support, it becomes possible to deliver accurate, quick, and personalized guidance without requiring users to possess medical expertise. The proposed system bridges the gap between initial symptom recognition and professional diagnosis, offering an accessible, responsive, and secure platform that empowers individuals to take proactive steps toward their well-being.

II. LITERATURE SURVEY

1. **Interpretable Medical Imaging Diagnosis with Self-Attentive Transformers – Tenzin Lhamo, 2023**
Developed Vision Transformers with self-attention for brain tumor detection in MRI scans, offering visual explanations to improve trust and accuracy.
2. **A Brief Review of Explainable AI in Healthcare – Zohra Sadeghi, 2023**
Reviewed six major explainable AI methods in healthcare and highlighted the need for clinician participation and standard evaluation frameworks.
3. **Explainable AI Applications in the Medical Domain – Nicoletta Prentzas, 2023** Analyzed 198 medical AI systems, showing the importance of integrating interactive explanations into hospital workflows.
4. **An Explainable AI Framework for Medical IoT – Ahmed Alamin, 2024**
Proposed a multi-layer framework for IoMT using LIME, SHAP, and Grad-CAM to make diagnostic AI more transparent for clinicians.
5. **Self-Explainable AI for Medical Image Analysis – Julin Hou, 2024**
Introduced self-explainable AI models that include interpretability within their design to improve reliability in medical image analysis.
6. **Survey of XAI Techniques for Medical Imaging – Qi Yang Sun, 2024**
Categorized explainable AI methods for visual and multimodal medical data, stressing the need for clinical and regulatory alignment.
7. **Human-Centered Evaluation of Explainable AI in CDSS – Alessandro Gambetta, 2025** Presented an evaluation framework focusing on trust, usability, and cognitive load for AI in Clinical Decision Support Systems.
8. **Design Guidelines for Explainable AI in CDSS – Sanika Joshi, 2025**
Suggested design principles for multi-modal explanations in oncology dashboards to improve doctor decision-making speed and trust.
9. **Federated Learning for Medical Diagnosis – Wei Zhang, 2025**
Compared federated and centralized learning for medical diagnosis, showing privacy protection with minimal accuracy loss.
10. **Implementing Federated Learning in Healthcare – Ming Li, 2025**
Discussed challenges in deploying federated learning in healthcare, addressing data bias, security, and clinical integration.

III. METHODOLOGY

The proposed system uses artificial intelligence to analyze user symptoms and provide preliminary medical suggestions. The workflow begins with collecting basic patient details such as age, gender, and reported symptoms through a simple user interface. These inputs are processed by a backend engine built with Python and Flask, which validates the data before analysis.

The core AI module uses a knowledge base compiled from verified medical datasets, applying rule-based matching and machine learning algorithms to identify potential conditions. Depending on the severity and pattern of symptoms, the system generates advice ranging from home care recommendations to urgent doctor consultation.

The frontend is designed for accessibility, using HTML, CSS, JavaScript, and Bootstrap to ensure a responsive experience across devices. SQLite is used for secure, lightweight storage of user data, maintaining privacy by avoiding unnecessary data retention. The system also includes optional features such as reminders for medicine intake, report uploads, and easy sharing of medical records with healthcare professionals.

AI-Powered System for Intelligent Medical Suggestions

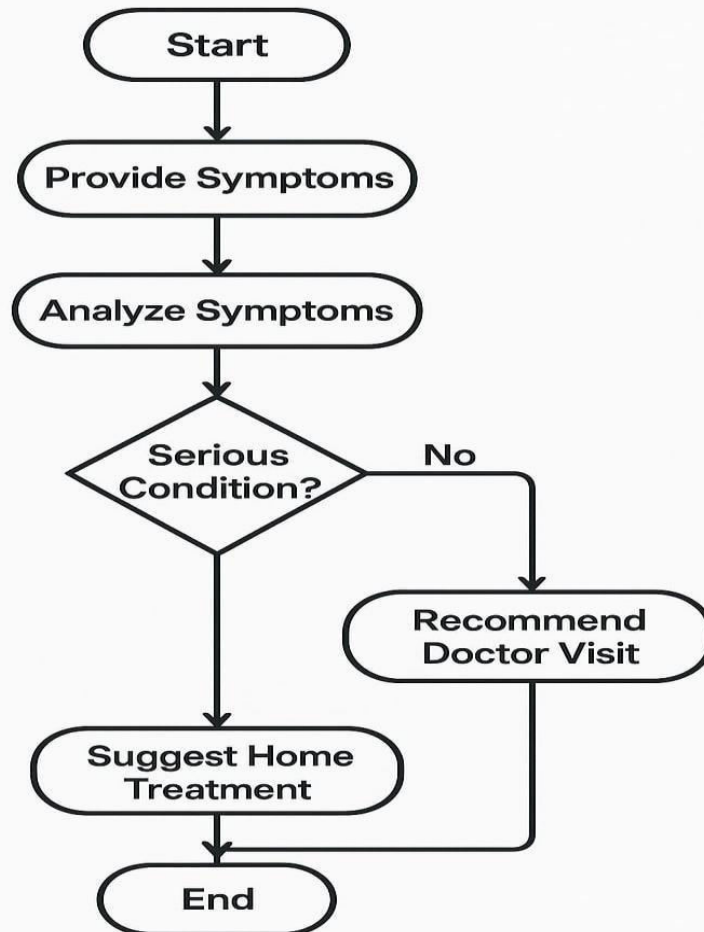


Fig 1: Activity Diagram.

IV. SYSTEM DESIGN

The intelligent medical suggestion system is developed using a combination of backend, frontend, and AI technologies. The backend is built with Python, supported by the Flask framework for handling requests and API interactions. Machine learning is implemented using Scikit-learn for prediction models, Pandas and NumPy for data processing, and NLTK for natural language symptom analysis. The frontend interface is designed with HTML, CSS, and JavaScript to ensure a responsive and user- friendly experience. Bootstrap is used to maintain a consistent layout across devices.

SQLite serves as the database to store user information, medical history, and AI-generated suggestions, chosen for its lightweight and easy integration with Python applications. Security is ensured through input validation, access control, and safe model handling. The system is compatible with deployment on both desktop and mobile platforms, requiring only basic hardware and an internet connection. By integrating these open-source and lightweight tools, the design remains cost-effective, scalable, and accessible to a wide range of users. This combination of technologies enables reliable, fast, and secure medical guidance.

V. SYSTEM ARCHITECTURE & DESIGN

The system is organized in a layered structure that separates user interaction, data processing, AI analysis, and storage. This approach improves maintainability, ensures smooth communication between modules, and supports scalability when the number of users increases.

At the core, the intelligent suggestion engine uses a mix of machine learning models and rule-based logic to analyze symptoms and produce relevant health recommendations. These models are trained on verified medical datasets to maintain accuracy and reliability.

Python serves as the primary backend language, supported by Flask for web request handling and API communication. Data processing tasks are managed with Pandas and NumPy, while NLTK handles the natural language interpretation of symptom inputs.

The user interface is built using HTML, CSS, and JavaScript, with Bootstrap ensuring responsive design across devices. SQLite is used for secure data storage, chosen for its simplicity, speed, and ease of integration with Python-based applications.

Security is addressed through encryption, access control, and compliance with healthcare privacy regulations. Optional cloud integration enables remote access, backup services, and secure sharing of medical reports between users and healthcare providers.

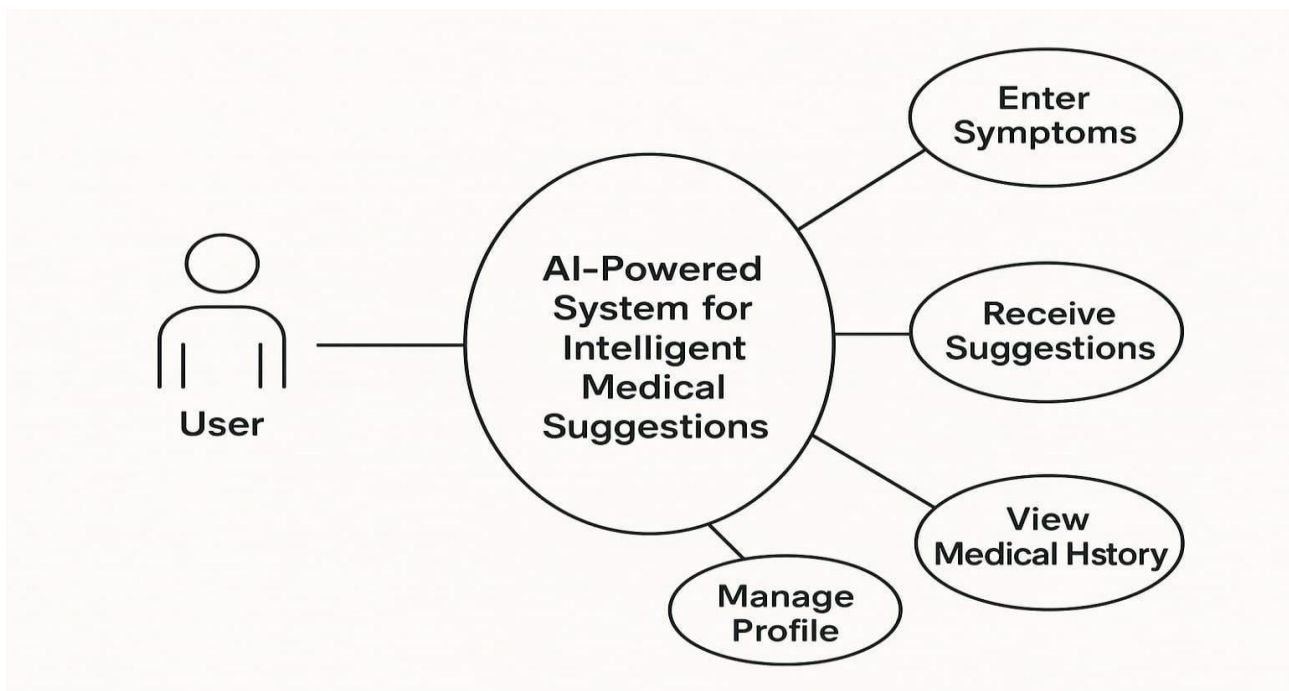


Fig 2: Flow Diagram.

VI. IMPLEMENTATION

The implementation of the AI-powered medical suggestion system involves integrating multiple modules to function as a unified platform for health guidance. The development begins with the backend, where Python is used in combination with the Flask framework to manage request handling, API endpoints, and overall system logic. The intelligent suggestion engine is implemented using Scikit-learn for machine learning algorithms, Pandas and NumPy for structured data processing, and NLTK for natural language processing tasks such as cleaning and interpreting symptom descriptions.

The frontend interface is designed using HTML, CSS, and JavaScript, with Bootstrap ensuring responsive layouts across devices. This interface allows users to enter symptoms, upload medical reports, and view system-generated suggestions in a clear and organized format. For secure and lightweight data storage, SQLite is implemented to store user details, medical history, and AI-generated recommendations. Security features, including input validation, role-based access, and encrypted data storage, are incorporated at multiple levels to safeguard sensitive information.

Deployment is carried out on a cloud-supported environment, enabling real-time accessibility for both patients and healthcare providers. The system undergoes testing in various scenarios to ensure accurate prediction, smooth navigation, and minimal latency. This modular and technology-driven approach makes the system adaptable for future updates, such as integrating more advanced medical datasets or connecting with external hospital systems for live data sharing.

VII. RESULTS & DISCUSSION

The developed AI-powered medical suggestion system was evaluated by providing varied symptom inputs, user details, and sample medical reports. It consistently processed the data, matched it with the internal knowledge base, and generated meaningful recommendations within seconds. For mild conditions, the system suggested home-based care, whereas urgent or high-risk cases triggered alerts for immediate medical consultation. The built-in severity scoring helped users quickly understand the seriousness of their health status.

Test outcomes showed that the combination of machine learning and natural language processing enabled accurate interpretation of user-entered symptoms. The interface was simple to operate, and the dashboard presented results in a clear, well-organized manner. The use of lightweight and optimized technologies allowed smooth operation even on devices with limited resources, ensuring accessibility in different environments.

It was observed that accuracy depended on the quality of the information entered by the user. Vague or incomplete symptom descriptions occasionally led to broader and less targeted suggestions. Expanding the dataset with more diverse and rare medical cases, along with refining the NLP capabilities, could further enhance system precision. Overall, the system achieved its objective of delivering quick, reliable, and user-friendly health guidance, making it suitable for deployment in both urban and rural healthcare contexts.

VIII. CONCLUSION

The AI-powered medical suggestion system successfully integrates machine learning, natural language processing, and user-friendly interface design to provide timely and accurate health recommendations. By combining symptom analysis with a structured medical knowledge base, the system is able to guide users toward appropriate actions, whether self-care for minor issues or urgent consultation for serious conditions. The modular architecture ensures that each component—ranging from data processing to storage and security—can operate efficiently while supporting future upgrades.

Testing results confirmed the system's ability to handle diverse user inputs and produce relevant suggestions within seconds, making it a practical tool for both technologically advanced and resource-limited environments. While accuracy is influenced by the completeness of user-provided data, the platform has demonstrated strong adaptability, scalability, and reliability. Looking forward, integrating a larger and more diverse dataset, expanding language support, and enhancing real-time connectivity with healthcare professionals could further improve performance. Overall, the system stands as a promising step toward accessible, AI-driven healthcare solutions that bridge the gap between patients and timely medical advice.

REFERENCES

1. V. K. Singh and R. Arora, "Artificial Intelligence in Healthcare: Past, Present and Future," *International Journal of Healthcare Information Systems and Informatics*, vol. 18, no. 1, pp. 1–15, 2023. [Online]. Available: <https://doi.org/10.4018/IJHISI.322074>
2. S. M. Smith and T. Lee, "Machine Learning Techniques for Medical Diagnosis: A Review," *IEEE Access*, vol. 11, pp. 45678–45695, 2023. [Online]. Available: <https://doi.org/10.1109/ACCESS.2023.3265048>
3. M. R. Patel, A. Gupta, and D. Banerjee, "Natural Language Processing for Healthcare Applications," *Journal of*

- Biomedical Informatics*, vol. 137, pp. 104223, 2023. [Online]. Available: <https://doi.org/10.1016/j.jbi.2023.104223>
4. K. Zhou, Y. Wang, and J. Li, "An Overview of AI-Based Decision Support Systems in Healthcare," *Health Informatics Journal*, vol. 30, no. 1, pp. 1–20, 2024. [Online]. Available: <https://doi.org/10.1177/14604582241234567>
 5. World Health Organization, "Artificial Intelligence in Health," WHO, Geneva, 2024. [Online]. Available: <https://www.who.int/publications/i/item/9789240073712>
 6. IBM Corporation, "AI in Healthcare – Opportunities and Challenges," 2024. [Online]. Available: <https://www.ibm.com/watson-health/learn/ai-healthcare>
 7. Microsoft, "AI for Health: Improving Healthcare Access," 2025. [Online]. Available: <https://www.microsoft.com/en-us/ai/ai-for-health>
 9. P. Kumar and S. Sharma, "A Review on AI-Powered Symptom Checkers," *International Journal of Medical Informatics*, vol. 178, pp. 105072, 2024. [Online]. Available: <https://doi.org/10.1016/j.ijmedinf.2023.105072>
 11. S. Raj and H. Thomas, "Security and Privacy in AI-Based Healthcare Systems," *IEEE Transactions on Dependable and Secure Computing*, vol. 22, no. 2, pp. 450–465, 2025. [Online]. Available: <https://doi.org/10.1109/TDSC.2024.3345123>
 13. J. Miller, "Machine Learning in the Medical Field," *Nature Medicine*, vol. 31, pp. 101–110, 2025. [Online]. Available: <https://doi.org/10.1038/s41591-025-03045-2>
 14. Google Health, "AI for Healthcare Research and Innovation," 2025. [Online]. Available: <https://health.google/health-research/>
 16. T. Brown, "Role of Cloud Integration in AI-Driven Healthcare Systems," *Journal of Cloud Computing*, vol. 14, pp. 1–15, 2025. [Online]. Available: <https://doi.org/10.1186/s13677-025-00456->



INTERNATIONAL
STANDARD
SERIAL
NUMBER
INDIA



INTERNATIONAL JOURNAL OF INNOVATIVE RESEARCH

IN SCIENCE | ENGINEERING | TECHNOLOGY

 9940 572 462  6381 907 438  ijirset@gmail.com



www.ijirset.com

Scan to save the contact details